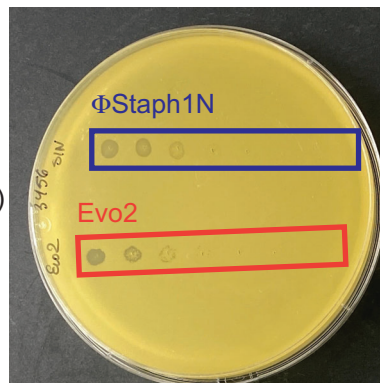
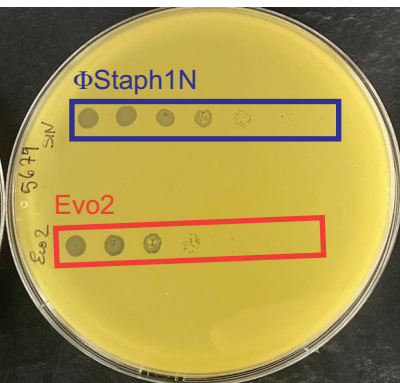


For Figure 3-figure supplement 2: Plaquing images of bacteriophage Φ Staph1N and Evo2 against mutant MW2 and LAC strains.

AH3456 (MW2 *mgrA*::tetM)



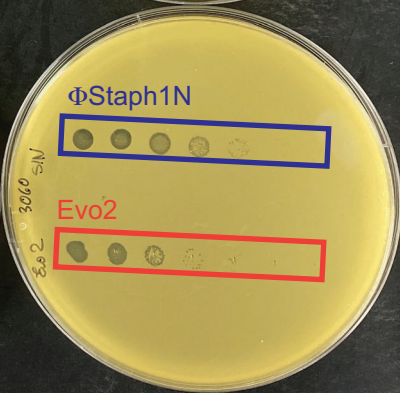
AH5679 (MW2 *sarA*::Tn(Erm))



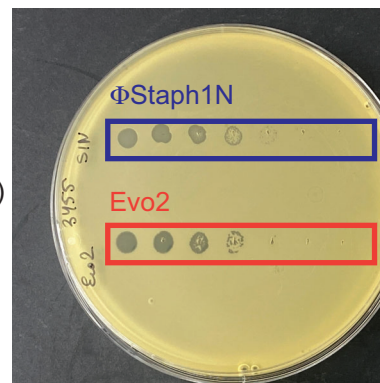
AH843 (MW2)



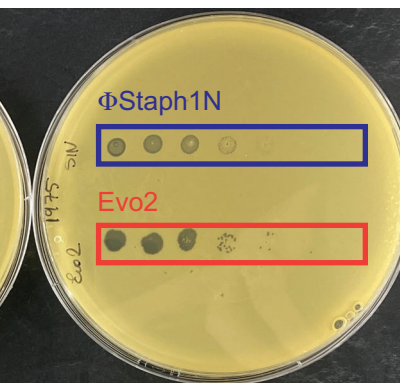
AH3060 (MW2 *arl*::tet)



AH3455 (LAC *mgrA*::tetM)



AH1975 (LAC Δarl)



AH1263 (LAC, *erm*^S)



AH1525 (LAC *sarA*::kan)

